

PRINCIPAL OFFICE:
8 Elizabeth Street, Maitland
Telephone (08) 8832 0000

ALL CORRESPONDENCE TO:
PO Box 57, MAITLAND, SA 5573
Fax (08) 8853 2494

Email: admin@yorke.sa.gov.au
Website: www.yorke.sa.gov.au



Mobile Food Vendor Location Rules Maps

IS175B

Responsible Officer: SCO

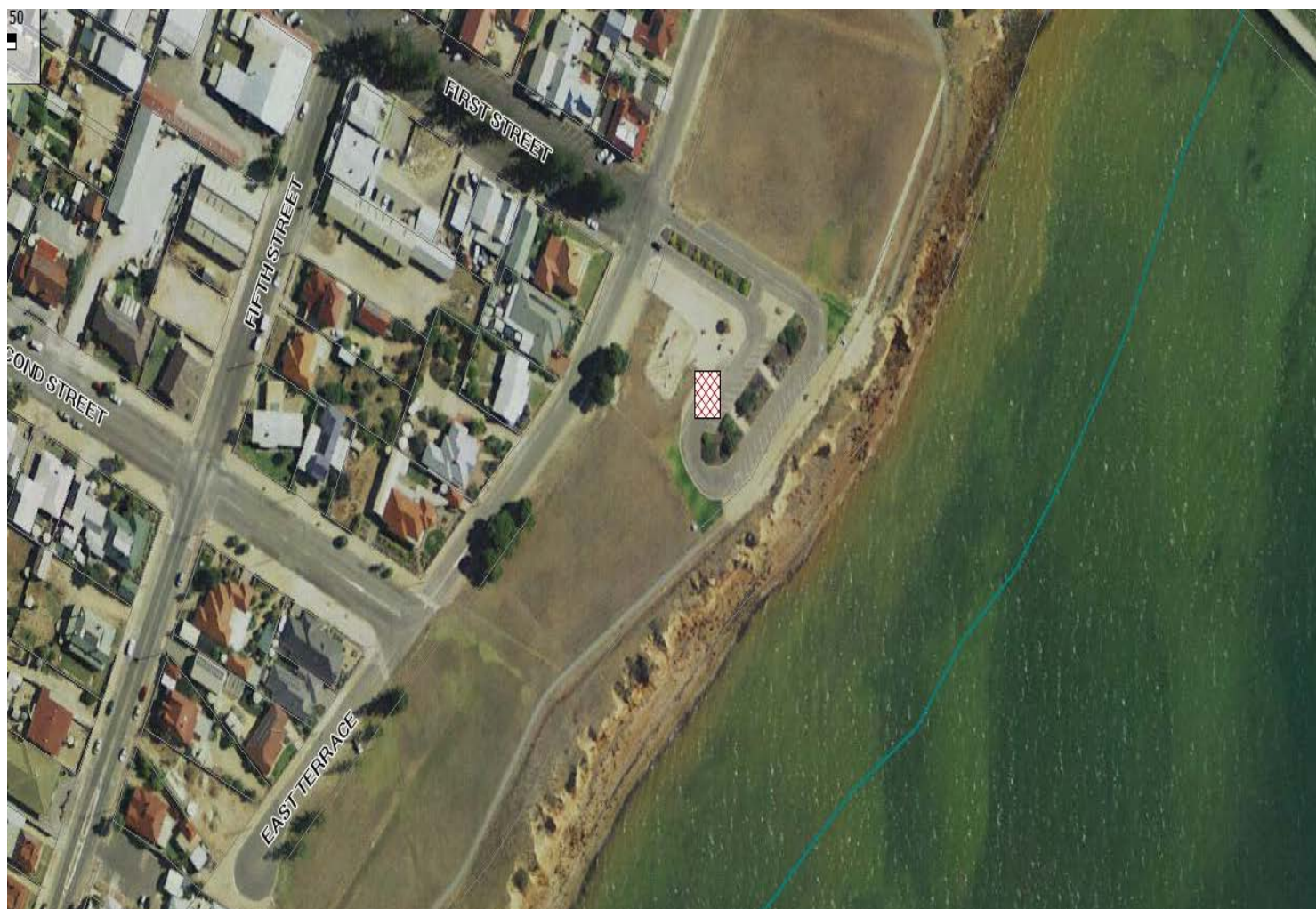
Issue Date: 31/05/2019

Next Review Date: June 2021

Mobile Food Vendors Locations (Location Rules)

Playground Carpark

East Terrace, *ARDROSSAN*



Tidal Pool

O'Hallaron Parade, *EDITHBURGH*



Community Centre

Slow Street, *MARION BAY*



Harry Butler Memorial

Curramulka Road, *MINLATON*



Edwardes Terrace

PORT VICTORIA



Esplanade

POINT TURTON



Black Point Road

BLACK POINT



Jetty Road

PORT JULIA



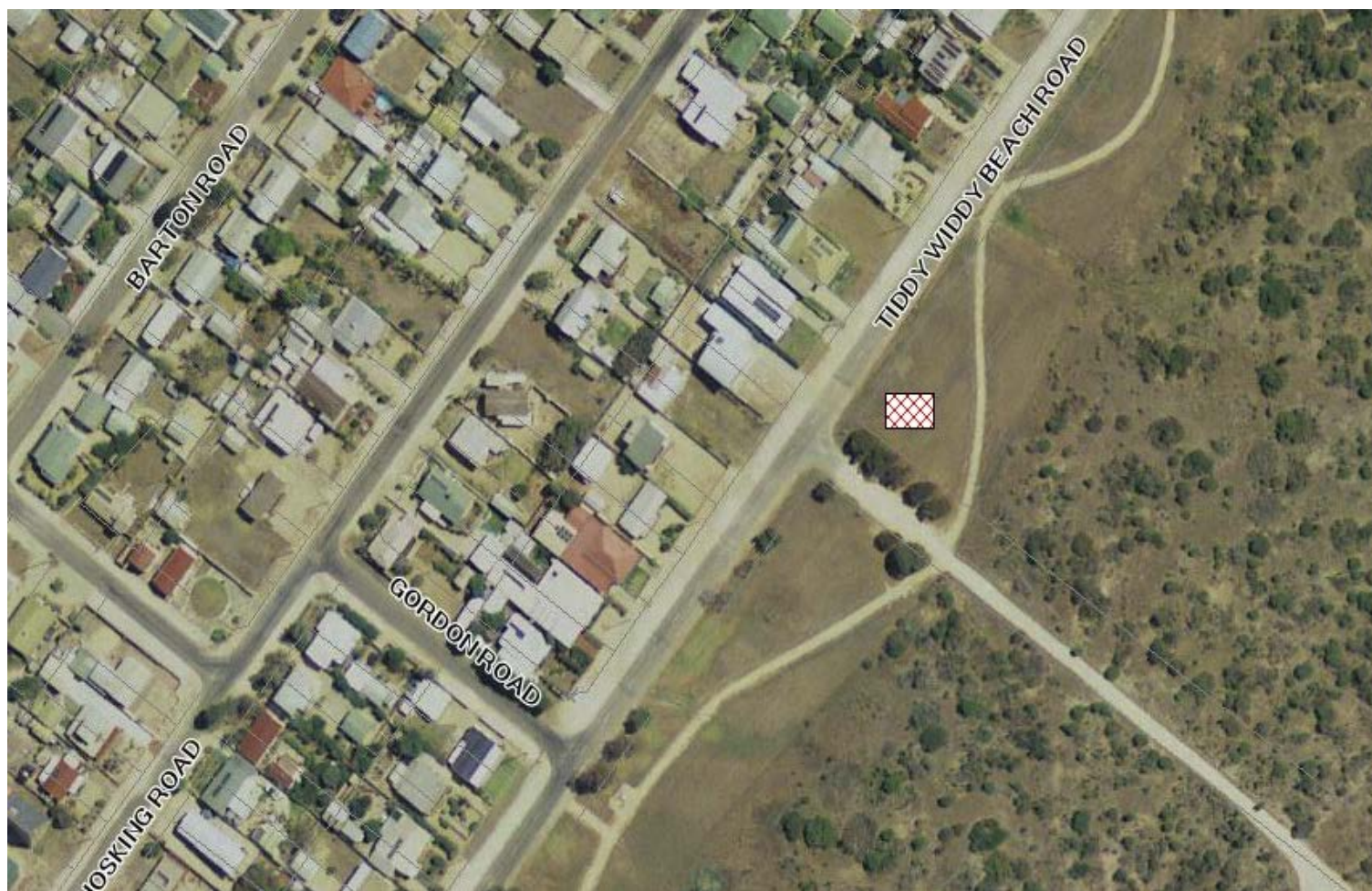
Marine Parade

PORT MOOROWIE



Tiddy Widdy Beach Road

TIDDY WIDDY BEACH



Esplanade

WOOL BAY



Rogues Point Road

JAMES WELL

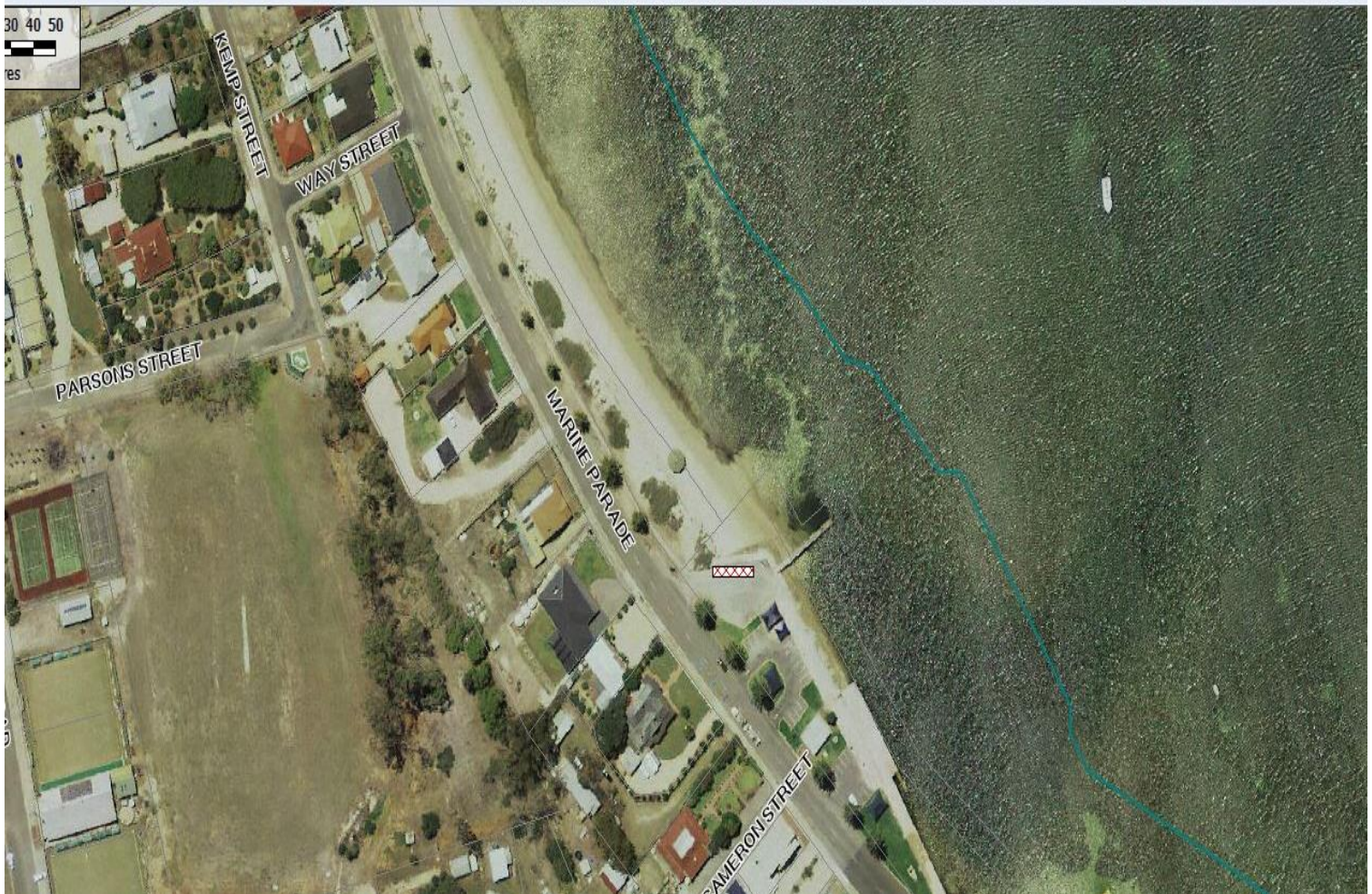


Old Boat Ramp Car Park Anzac Parade, STANSBURY



Wharf Car Park

Marine Parade, PORT VINCENT

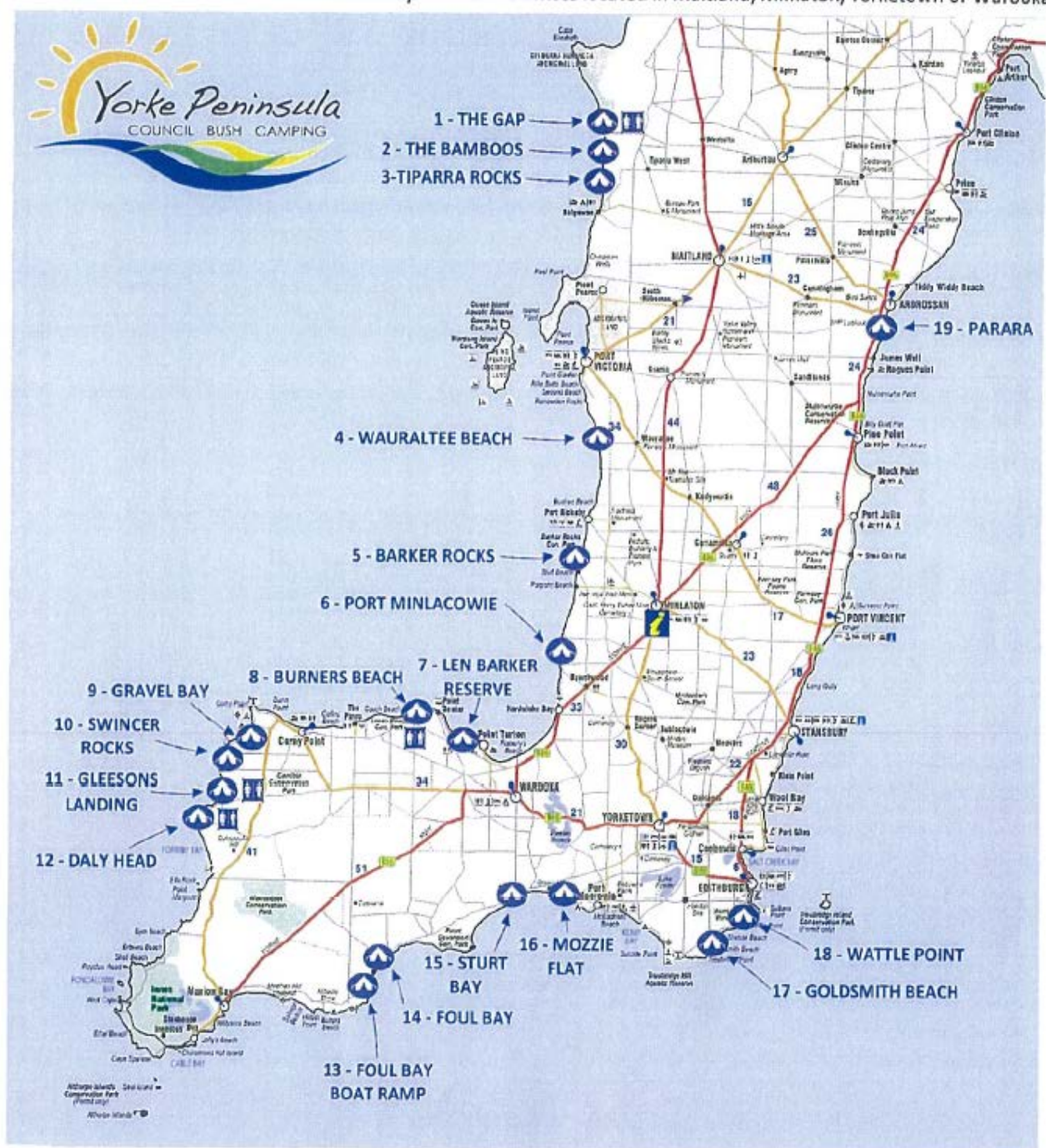


Weaners Flat Reserve

Stansbury Road, Yorketown



Council's Designated Bush Camping Locations



The Gap Camp Ground

Gap Road, Balgowan



The Bamboos Camp Ground

HD. Tiparra



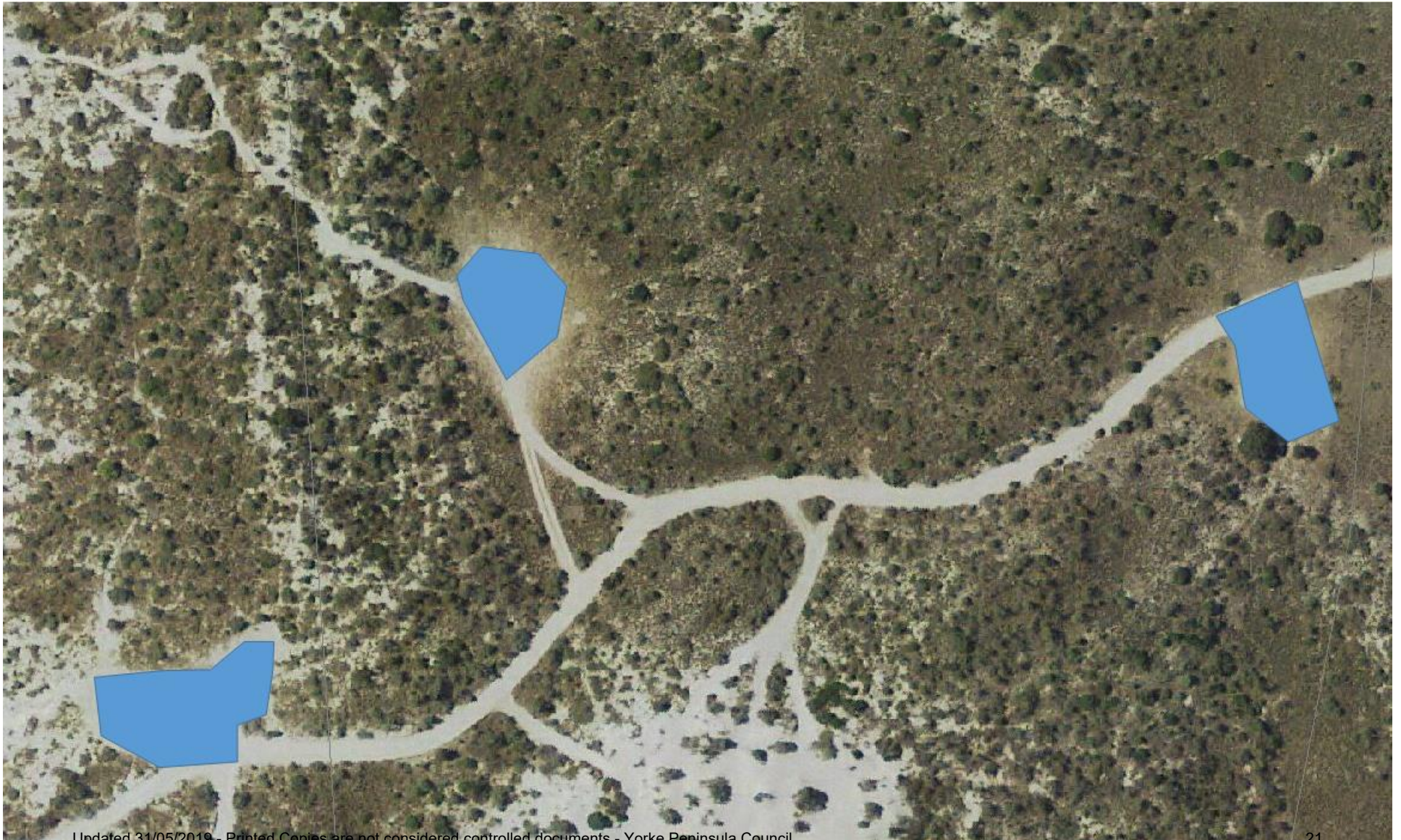
Tiparra Rocks Camp Ground

HD. Kilkerran



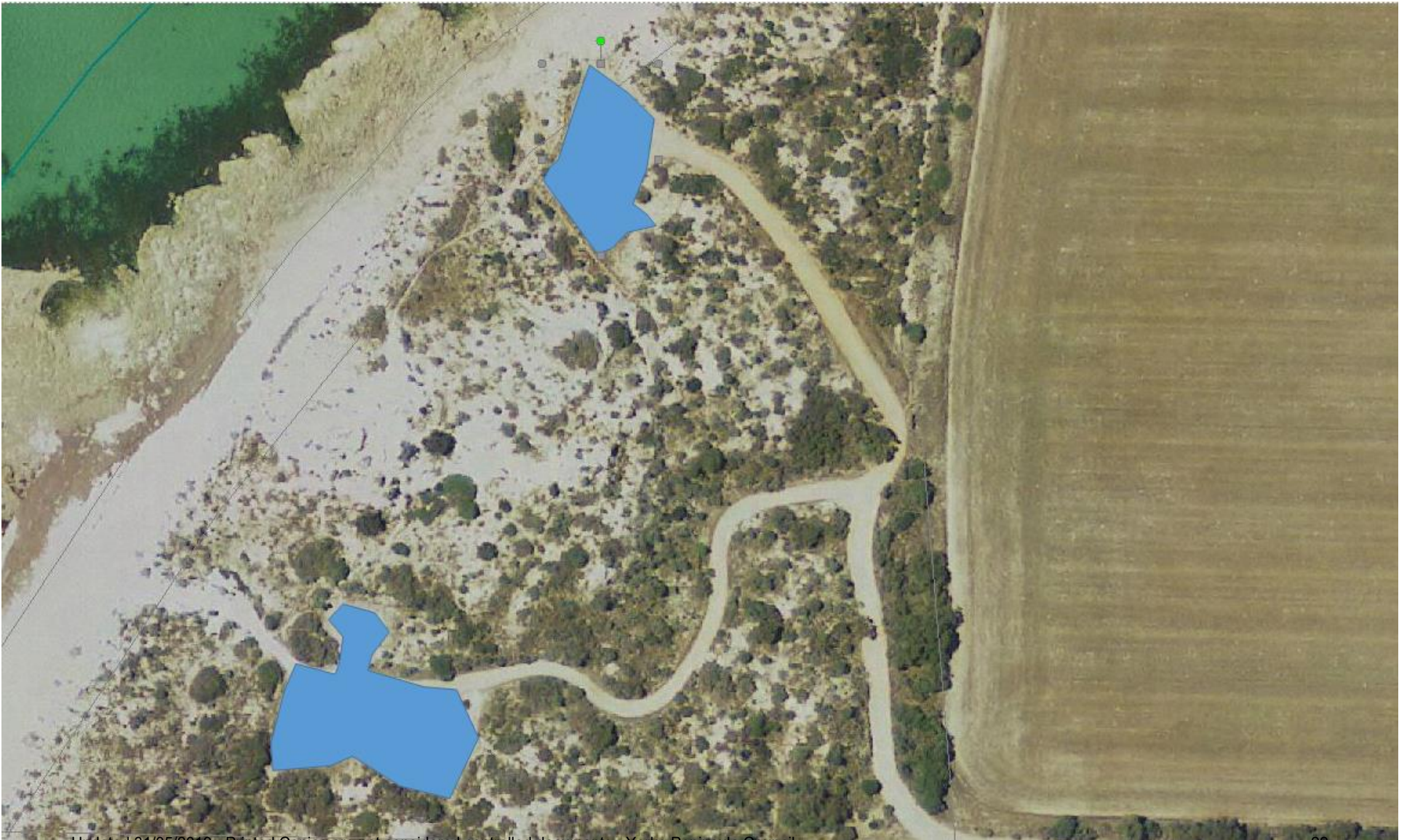
Wauraltee Beach Camp Ground

Conservation Drive, Wauraltee



Barkers Rocks Camp Ground

Barkers Rocks Road, Bluff Beach



Port Minlacowie Camp Ground

Beegoodye Wells Road, Minlaton



Len Barker Reserve Camp Ground

North Coast Road, Point Souttar



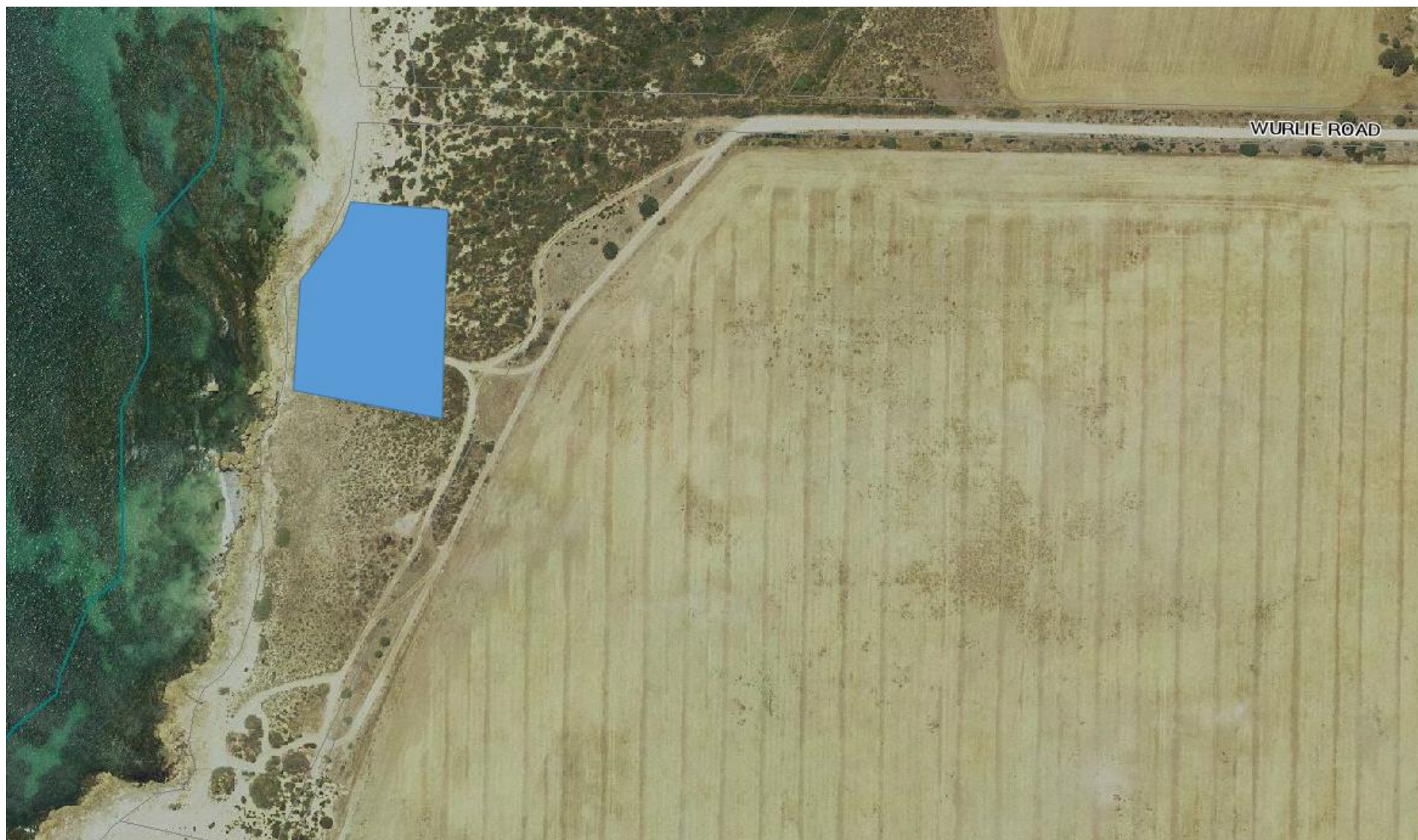
Gleesons Landing Camp Ground

Gleesons Road, White Hut



Swincer Rocks Camp Ground

Wurlie Road, Corny Point



Gravel Bay Camp Ground

Light House Road, Corny Point



Goldsmith Beach Camp Ground

Troubridge Point Drive, Honiton



Wattle Point Camp Ground

Heel Road, Edithburgh



Mozzie Flat Camp Ground

Mozzie Flat Road, Port Moorowie



Sturt Bay Camp Ground

South Coast Road, Warooka



Foul Bay Camp Ground

South Coast Road, Foul Bay



Foul Bay Boat Ramp Camp Ground

Boat Ramp Road, Foul Bay



Daly Head Camp Ground

Daly Head Road, White Hut



Burners Beach Camp Ground

Eastern End
North Coast Road, Point Souttar



Burners Beach Camp Ground

Western End
North Coast Road, Point Souttar

